

AutoClone™

Fast and Efficient Windows Data Replication

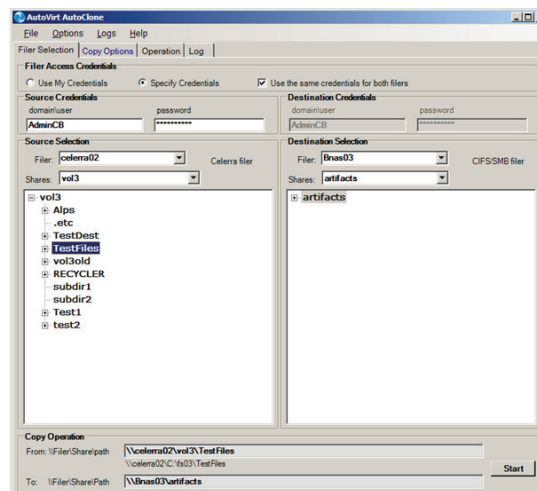
DATA SHEET

Introduction

Copy twice the data in half the time with AutoClone! AutoClone is the smartest, fastest copy program available anywhere. Operating at the share level, AutoClone copies files at unparalleled speeds and preserves all metadata, including ACLs. The intuitive user interface enables you to manage complex replication tasks and streamline your storage management initiatives. Use AutoClone to accelerate your data movement activities, including nightly backups, data migration, data archiving, server consolidation, and load balancing.

Features

- **Speed:** AutoClone is optimized for modern storage and network technologies, making it up to 20 times faster than other solutions available on the market today.
- **Exception Handling:** AutoClone does not interrupt the replication process when handling exceptions, or offending files (i.e., open, encrypted, password-protected, etc.).
- **Destination Share Support:** AutoClone creates destination shares, including nested shares, and copies ACLs.
- **Heterogeneous Storage Support:** AutoClone delivers optimal performance across your heterogeneous NAS devices and Windows File Servers.
- **Performance Management:** AutoClone allows you to manage system resources and limit the network traffic load by throttling to obtain maximum performance. Save and Restore Program options let you retrieve reusable copy job configurations.



Configurations

- Windows XP, Vista, 2003 or 2008 Server, with .NET 3.5 Framework, SP1
- Windows domain with active directory
- Copies between Windows NTFS systems, NetApp NAS, EMC Celerra, and generic CIFS-compatible servers
- May be installed on a source or target file server, but can also run on a third system

Licensing

- One license per domain
- Perpetual and unlimited use in a single domain
- Annual maintenance and basic support: 20% of list price